



SOUND FIGHTER FANS™

by TRIANGLE ENGINEERING OF ARKANSAS, INC.

1101 N. Redmond Rd., Jacksonville Arkansas 72076

1-800-255-9014 • Fax (501) 982-5691



www.trianglefans.com

TUBE AXIAL FANS

Tube Axial Fans are designed for applications in duct or intake-exhaust systems which have low resistance to air flow. Belt driven units have the motor mounted outside the air stream for applications involving corrosive fumes, smoke or hot air.

- Typical applications include exhaust for paint spray booths, mixing rooms, booster service, and many other ventilating requirements.
- Available in sizes 24" through 48"
- CFM ranging from 5,700 to 57,000
- Welded steel housing tube
- Polyester powder coat paint
- Cast aluminum fan blade for spark resistant construction.
- Optional guards, access door, motor cover and mounting legs
- TAB belt design
- TAD direct drive



VANE AXIAL FANS

Vane Axial Fans are adaptations of Tube Axial Fans using pre-rotative or post-rotative vanes to improve the fan's efficiency and increase working pressure.

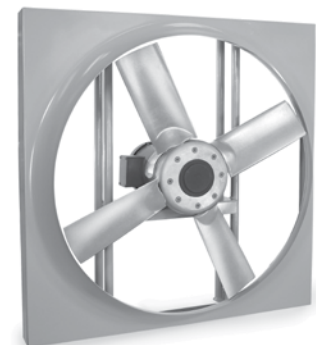
- VAB belt design
- VAD direct drive



PANEL FANS

FHI Panel Fans are designed to meet a variety of applications from general ventilation in commercial to heavy duty industrial applications involving higher static pressures and cfm requirements. Available in belt or direct drive construction.

- Supply, exhaust or reversible
- Available in sizes 24" through 84" diameters
- CFM ranging from 5,400 to 117,000
- Rugged all-welded structural frame for added support and lower vibration.
- Polyester powder coat paint
- Deep spun venturi-type orifice for quieter, more efficient operation





AIR CIRCULATOR FANS

TP Air Circulators offer economical and efficient air movement for almost any kind of indoor or outdoor locations.

- Used in furnace rooms, welding booths, drying rooms, poultry houses, barns, drilling rigs, green houses, etc.
- Available in sizes 24" through 42" diameters
- CFM ranging from 5,400 to 29,000
- Polyester powder coat paint for corrosion resistance
- Removable heavy gauge safety guards

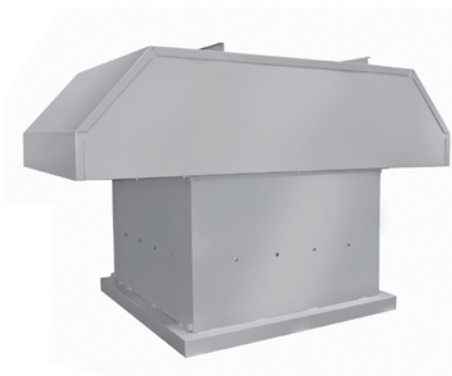
JET UPBLAST - Powered Roof Ventilators

Jet Upblast Fans are used in many commercial/industrial applications. The JD (direct drive) and JBI (belt drive) have the motor inside the air stream of the fan. The JBX (belt drive) has the motor outside the air stream with features such as extended lube lines and belt guard.

- Used for paint booth exhaust, chemical fume exhaust, removal of dust particles heavier than air, basic air circulation, etc.
- The JBI and JBX units are available in 20" to 84" diameters.
- CFM ranging from 4,700 to 117,000
- Airfoil cast aluminum spark resistant propellers
- Heavy Gauge steel, all-welded curb base
- Aluminum dampers, neoprene bumpers, rain channels, and lifting lugs
- The JD units are available in 20" to 60" diameters.



HOODED FANS



HHC Hooded Roof Ventilator Fans are ideal for commercial/ industrial applications. These units are designed for exhaust, supply or reversible duty

- Available in sizes 24" through 60" diameters
- CFM capacities up to 62,000
- The hood is heavy galvanized steel with mill finish
- Polyester powder coat paint for entire fan panel, fan support and brackets
- Shipped complete
- Optional bird screens or filters

Other fine products by
**TRIANGLE ENGINEERING
OF ARKANSAS:**

Heat Busters® And Portable Coolers™

Jetaire™ High Velocity Fans

Industrial Wall Fans

Agricultural and Barn Fans

Whole House Fans

MasterBreeze™ Air Circulators

General Purpose Exhaust Fans



Visit our website at
www.trianglefans.com
for catalogs & specifications



SOUND FIGHTER FANS™

by TRIANGLE ENGINEERING OF ARKANSAS, INC.

1101 N. Redmond Rd., Jacksonville Arkansas 72076

1-800-255-9014 • Fax (501) 982-5691

Specifications subject to change without notice. 1/09